

OVERHEAD DOORS

ASSA ABLOY

971 H LAVAL CRES.
KAMLOOPS, BC V2C 5P4

PHONE: (250) 374-5655

FAX: (250) 828-1054

DATE: SEPT 18 /18

PROJECT: ECHO LANDING SUNPEAKS BC

SECTION: DIV 8 OVERHEAD DOORS OPERATORS

GUARANTEE:

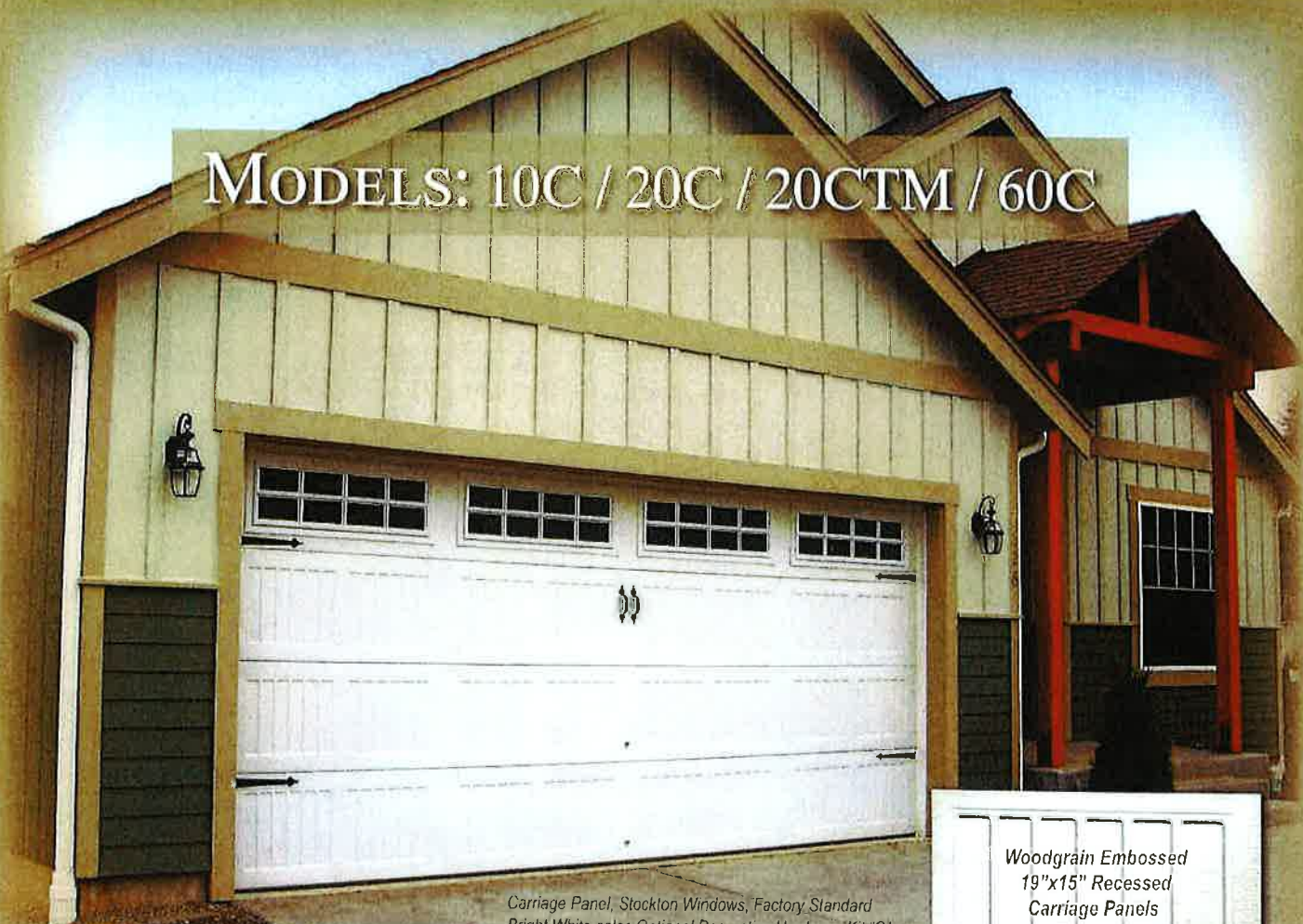
ALL MATERIALS ARE GUARANTEED FROM ANY DEFECTS FROM THE USE OF MATERIALS, DEFICIENCIES OF DESIGN STRENGTH OR BY REASON OF POOR WORKMANSHIP WHICH MAY APPEAR WITHIN ONE YEAR(S) FROM THE DATE OF SUBSTANTIAL PERFORMANCE.

ASSA ABLOY ENTRANCE SYSTEMS

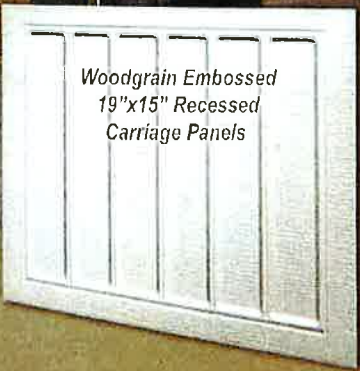


DAN VALIQUETTE

MODELS: 10C / 20C / 20CTM / 60C

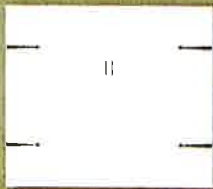


Carriage Panel, Stockton Windows, Factory Standard Bright White color, Optional Decorative Hardware Kit "C"



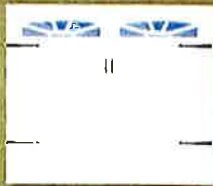
Woodgrain Embossed 19"x15" Recessed Carriage Panels

CARRIAGE PANEL

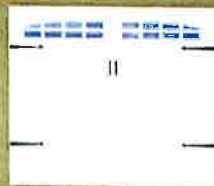


The Carriage panels offer a unique and stylish appearance to your home. Three optional decorative hardware kits can also be added to enhance the look and charm of your garage doors. Eight optional window designs are shown below. Optional glass types are shown on page 7.

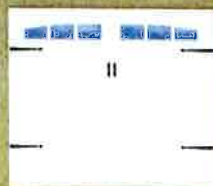
DESIGN SELECTION



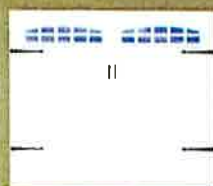
ASHTON



HERITAGE



ARCHED STOCKBRIDGE



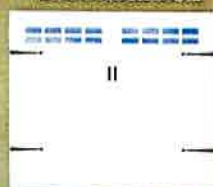
CASCADE



PLAIN LITE



STOCKBRIDGE



STOCKTON



WILLIAMSBURG

DECO HARDWARE KITS



A - CLASSIC SERIES



B - TRADITIONAL SERIES



C - AMERICANA SERIES

LIMITED LIFETIME WARRANTY



Therma Tech™, Therma Tech II™, Therma Max™ and Tri Tech™ sections come with a limited lifetime warranty against deterioration due to rust-through for as long as you own your home, a twenty (20) year warranty against deterioration of insulation efficiency (Thermal Drift) and a five (5) year warranty against delamination. Hardware and accessories are warranted against defects in material and workmanship for one (1) year. Contact your Northwest Door Dealer for complete warranty, maintenance and painting instructions. Northwest Door reserves the right to make product changes without notice. Top section must be strutted on motor operated doors.

WARNING: Any adjustment to your door should be made by an experienced garage door installer, such as your Northwest Door dealer. Serious injury can result from improper adjustments to your door.

Your garage door is typically one of the most prominent visual features on your home. However, your garage needs to be more than just attractive; it should compliment your home with beauty and functionality. Our Therma Tech™ garage doors do exactly that.



Traditional Panel, Plain Lite Windows

Our sandwich construction method uses two layers of high quality steel and a solid EPS (expanded polystyrene) core that forms a true **Thermal Break**; a barrier of protection from the weather outside plus additional security for your home. Our new 3" Tri Tech™ model is designed to protect you from the most extreme hot or cold environmental conditions with an R16 rating.

We have four door models (R9 through R16), four panel styles, and four standard colors to choose from. All are available with dozens of window/glass options so you will find the **perfect look** to complement your home. Therma Tech™ doors can also be easily field painted by others to meet your exact color requirement.

Northwest Doors are a great addition to your home.

Standard Configurations

Door Width	Number of Panels		
	Traditional - Ranch	- Carriage	
8', 9'	4	2	4
10'	5	2	4
12'	6	3	6
14'	7	3	6
16'	8	4	8
18'	9	4	8

Hardware Clearances

Clearances Hardware Type	Head Room	Side Room
Standard Lift	12"	3-1/2"
Low Clearance	3-1/2"	4-1/2"

Door sizes are available up to 20' wide and 14' high for over-sized special applications.



Traditional Panel, Waterford Windows

Ask your Door Dealer about our Virtual Showroom Tablet App and visit our Design Gallery at: www.northwestdoor.com



"Northwest Door is family owned and takes great pride in our products and satisfaction of our customers!"

LiftMaster. Northwest Door recommends LiftMaster® Professional Line Garage Door Openers on all Northwest Door® garage doors.



NORTHWEST DOOR®
Northwest Door, Incorporated
19000 Canyon Road East - Puyallup, WA 98375-9746
800-522-2264 www.northwestdoor.com

ASSA ABLOY Entrance Systems
971-H Laval Crescent
Kamloops, B.C. V2C 5P4



FOUR DOOR SERIES TO MEET EVERY NEED

Therma Tech™, Therma Tech II™, Therma Max™ and Tri Tech™ are built using Northwest Door's time proven sandwich-type construction. This method of construction has proven itself to be superior over the past twenty years on hundreds of thousands of Northwest Doors in homes across the US and Canada.

Construction

Interior and exterior galvanized prepainted steel skins are pressure laminated to a CFC-free expanded polystyrene (EPS) core. This forms a true and natural Thermal Break. This construction is also both fire and smoke rated. 2" and 3" thick models also have a flexible joint seal running the full width of the doors.

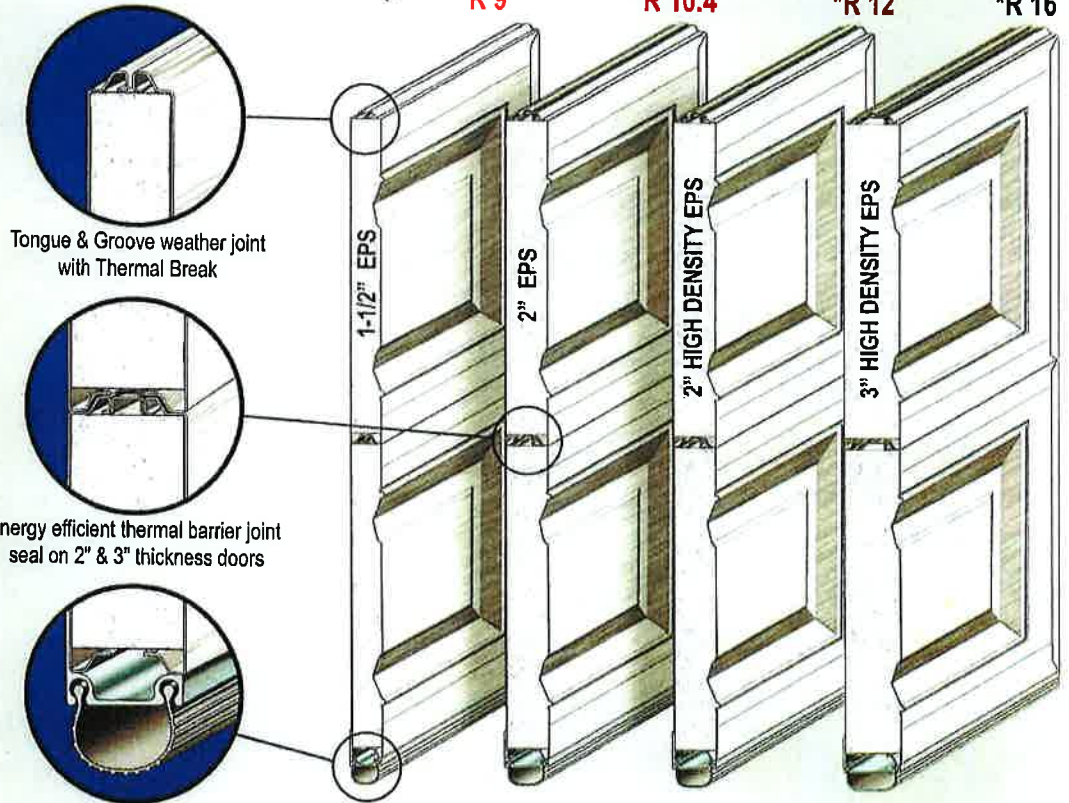
~~Thermal Drift~~

The result is an extremely strong and beautiful maintenance-free garage door with outstanding insulating and sound deadening qualities.

NO CFC's NO HCFC's

This product contains no ozone damaging Chlorofluorocarbon or Hydrochlorofluorocarbon present in some urethane foam products.


Therma Tech™ *R 9
 Therma Tech II™ *R 10.4
 Therma Max™ *R 12
 Tri Tech™ *R 16



*R Values are calculated specifically for the colder climates and offer the best long term insulating value.

THERMAL BREAK REDUCES HEAT/COLD TRANSFER 15.5%

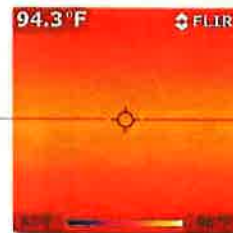
An independent laboratory performed a comparison test on the Northwest Door Therma Tech II™ and a competitor's insulated door. The competitor's door is typical of the industry standard for insulated garage door construction. Both doors were 2" thick, used identical EPS insulation cores and identical steel skins front and back, however the Therma Tech featured Northwest Door's **Thermal Break** design.

After two hours of direct exposure to 135° Fahrenheit, temperatures were measured for thermal transmission from the front to the back of the door. The Therma Tech II measured 94° F as compared to 109° F on the competitor's door. This is a substantial 15.5% difference at the most critical area of the door, the section joints. The interior surface comparative temperatures of the center of the door panels were also sizeable, measuring 7.2% lower than the competitor.

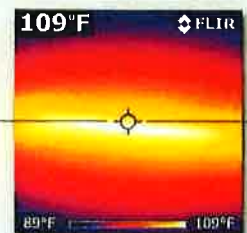
The reason for these large differences is that the Northwest Door **Thermal Break** does not have metal-to-metal contact from one side of the door to the other, like that of the competitor's door. This reduces the thermal transmission of the door, which improves its overall insulation value and effectiveness.

This study confirms that the Northwest Door Therma Tech II with **Thermal Break** dramatically out performs other insulated garage doors, as shown by the actual infrared thermal images.

INFRARED IMAGE COMPARISON



Lower Temperature with Thermal Break (Northwest Door)



Higher Temperature without Thermal Break (Competitor's)

Section Joints

All four Northwest Door products; Therma Tech™, Therma Tech II™, Therma Max™ and Tri Tech™ feature a **Thermal Break**.

8355

1/2 HP AC BELT DRIVE GARAGE DOOR OPENER



Smart, Quiet and Energy Efficient

Connectivity

- **MyQ® technology** enables you to securely monitor and control your garage door opener and houselights with your smartphone, tablet or computer.
- **Alerts** can be received as email or pop-up (push) notifications on your mobile device so that you always know the status of your garage door and houselights.
- **MyQ mobile app** is a free download requiring no annual activation fee.

Performance

- **P3™ Motors** from LiftMaster® are reliable, durable and powerful – designed specifically for your needs.
- **1/2 HP motor** with belt drive system provides quiet, reliable and maintenance free performance.
- **Motor Vibration Isolation System (MVIS®)** provides super quiet, smooth operation year after year.
- **Energy-efficient** operation consumes up to 75% less power in standby mode.
- **Lifetime motor** and belt warranty. 1-year parts warranty.

Security

- **Security+ 2.0™** safeguards your household – with every click a new code is sent to the garage door opener so that the door opens only for you.
- **PosiLock®** locks down your door by electronically monitoring against a forced opening.
- **Alert-2-Close** warning system provides audible and visual warnings when the garage door is about to close when using MyQ technology or Timer-to-Close.
- **The Protector System®** has safety sensors that project a light beam across the garage door opening, automatically reversing the door if anything interrupts the beam.

Included Accessories:



3-Button Remote Control (893MAX)

Allows you to control up to three openers, gates or MyQ-enabled light devices.



Multi-Function Control Panel® (882LM)

Enables you to turn garage door opener lights on and off from inside the garage.

Optional Accessories:



LiftMaster Internet Gateway (828LM)

Connect your MyQ-enabled garage door opener and accessories to the Internet with this device.



Ceiling Mount (195LM)

Hide the Wires and Cords. Give your garage the style it's been missing with this sleek ceiling mount. Works in most standard garages.



Remote Light Control (825LM)

Allows you to control any lamp with your garage door opener remote control or smartphone via the LiftMaster Internet Gateway.



Garage and Gate Monitor (829LM)

Enables you to monitor and close up to four garage doors or gates from any room in your house.

8355

1/2 HP AC BELT DRIVE GARAGE DOOR OPENER

SPEC SHEET STANDARD SPECIFICATIONS

DIMENSIONS

Installed Length: 128"
Maximum Door Opening: 7' 6" *
Headroom Clearance Required: 2"
*Up to 10' with optional 8' or 10' rails

CARTONS

Number of Cartons: 2
Carton 1: Dimensions and Contents:
- 20" x 12" x 10"
- 882LM Multi-Function Control Panel
- 893LM 3-Button Remote Control
- Garage Door Opener Head
- The Protector System® Safety Reversing Sensors
Carton 2: Dimensions and Contents:
- 10' 4" x 5" x 5"
- Assembled Solid-Steel T-Rail (Belt)

SECURITY+ 2.0™ RADIO CONTROLS

Coding System: Smart Receiver Code Button and Indicator Light
893LM 3-Button Remote Control
Operating Range: 200' (approximately)
Operating Temperature: -40°F to 150°F
Frequency:
- Remote Control: 310, 315 & 390 MHz Tri-Band
- Receiver: Frequency Agile on 310, 315 & 390 MHz
Security+ 2.0™ Anti-Burglary Coding

MyQ® RADIO

902-928 MHz
50 Channel FHSS (Frequency Hopping Spread Spectrum)
Provides two-way communication from garage door opener and MyQ enabled accessories
Enables remote closing of garage door with key MyQ accessories
Enables monitoring and control of garage door openers and lighting controls via internet-enabled computer or smartphone*
*Requires LiftMaster® Internet Gateway Accessory Model 828LM

SECURITY+ 2.0™ ENCRYPTED CONTROLS

882LM Multi-Function Control Panel
- Program Remote Controls
- Maintenance Alert System

CONVENIENCE / SAFETY

The Protector System Safety Reversing Sensors
Alert-2-Close Unattended Close Operation w/ Select Accessories*
Emergency/Quick Release
Automatic Trolley Reconnect
Down Safety Reverse
Up Safety Stop
Door Open/Beam Obstructed/Lights On
Maintenance Alert System
PosiLock® secure lock system
*Timer-to-close feature requires purchase of 880LM or 881LM control panel and is for sectional doors only, not one piece doors.

ELECTRICAL SPECIFICATIONS

POWER

Voltage: 120V AC, 60Hz
Wattage: 540 Total System
Current Rating: 4.5A
UL Listings: Yes
Length of Line Cord: 4' (3-prong)

ENERGY EFFICIENCY

Approximately 1 Watt Power in Standby Mode*
Enhanced CFL (Compact Fluorescent) Compatible
*Standby Mode at down limit, work lights off

LOGIC TYPE

Solid State Microcontroller with Built-in Surge Suppressor

LIGHTING

Number of Bulbs: 2
Maximum Wattage: 100 x 2
Adjustable Time, Solid-State Delay
Enhanced CFL (Compact Fluorescent) Compatible, Max 26 Watts

MECHANICAL SPECIFICATIONS

MOTOR

Horsepower: 1/2
RPM: 1,625
Thermal Protection: Automatic
Lubrication: Permanent

DRIVE MECHANISM

Drive Means: Full Reinforced Drive Belt
Reduction Means: Gear 16:1
Door Linkage: Adjustable Door Arm

ADJUSTMENTS

Force: Electronic/Internal Auto Force
Limit: Internal Electronic

TRAVEL RATE

Approximately 7.0" per second

SHIPPING WEIGHTS

Head: 24 lbs
Rail: 17 lbs.

MATERIALS

Chassis and Chassis Cover: Steel
Rail: Solid-Steel T
Trolley: Steel

WARRANTY

Lifetime Motor Warranty
Lifetime Belt Warranty
1 Year Parts Warranty

HOMELINK® Compatible (version 4.0 or higher)
w/QuickTrain™ Technology*

*May require an external adapter depending on the model and year of your vehicle.
Visit homelink.com for additional information.